

SHASHI ENGICON PVT. LTD.

Engineers & Consultants

AN ISO 9001:2000 Certified Company

Off Address: Mehta bhawan, opp. A.i.r., m.i. road, Jaipur.

Ph: 0141-4040972, 2363706, 2379509

Fax No: 0141-2371243

Email: sales@shashiengicon.com

rahulsharma@shashiengicon.com

Factory Address: F-163, Industrial Area, Jetpura-303 704

Ph: 01423-224558

About Us

We are pleased to introduce our company as one of the old leading & reliable companies in electrical field. We are pioneers in high tension (6.6 K.V & above) work. Our company is ISO 9001:2000 certified & we are Authorized Dealers, Distributors, Manufacturers Service Centre and Turnkey Contractors operating in the state of Rajasthan.

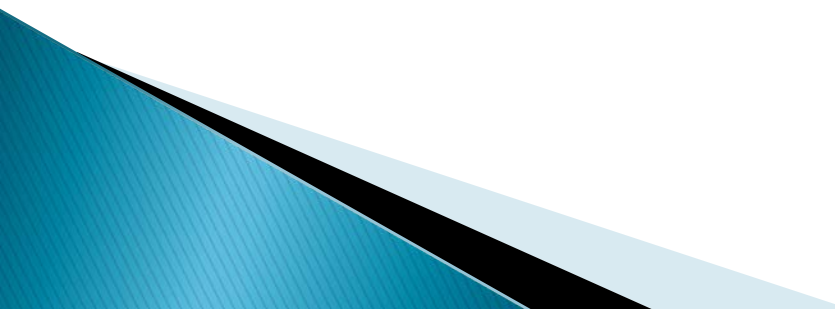
Our Chairman Mr. Dinesh Sharma has vast & past experience of 40 years in Electrical Field in the State of Rajasthan.

Our Managing Director Mr. Rahul Sharma has Versatile Experience of 16 years in Trading, Service Centre, Manufacturing & Contractor Ship in Electrical Field.

We are suppliers to various Government departments, State Electricity Boards (now Jaipur, Ajmer, Jodhpur Discoms, Prasaran & Utpadan companies) and Large Scale & Medium Scale Industry of Rajasthan. We are registered under “A” Class Vendor Registration Scheme in all the DISCOMS.

We also supply HT Equipments (Switchgears & Transformers) and render after sales service & AMC for the breakers supplied by our principle.

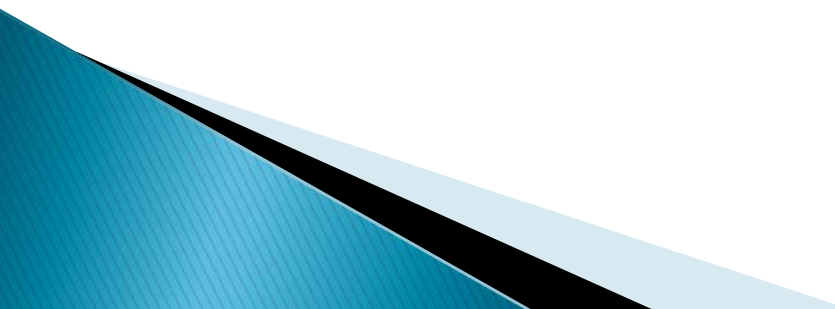
Human Expertise gives us the edges

- ▶ We have a competent team of responsive Back staff & Front office working on E- Mails. We have direct labour 25 under our pay roll & indirect labour approx. 60-70.
 - ▶ We are well equipped with Tools & Technique for carrying out specialized jobs.
 - ▶ We have a team of 4-5 qualified engineers having good experience in V.C.B. Repair & they are trained at factory/works of our principle suppliers.
- 

A) CHANNEL PARTNER OF M/S. ALSTOM T&D LTD., (formerly GEC ALSTHOM, Areva)

- ▶ Transformer – Sales
- ▶ H.T. Switch Gears (11 KV & 33 KV VCB) -- Spares, Sales & Service Centre
- ▶ Electromechanical, Protection & Microprocessor Relays -- Sales & Service
- ▶ R.M.U. & P.S.S – Sales

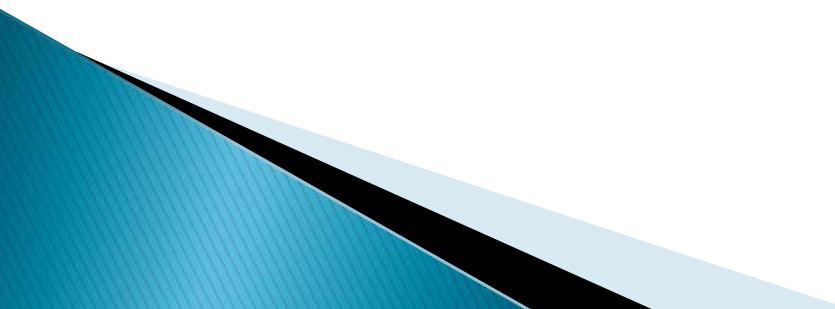
B. MANUFACTURING:

- ▶ **Steel Fabricated Items** – We have got manufacturing capacity of 350 to 400 Metric Tones per month. We fabricate Distribution Towers, L.T & 11 KV & 33 KV Cross Arms, Single phase & 3 Phase Transformer Structures, DP Sets, 11 & 33 KV Lattice Towers, different types of clamps etc.
 - ▶ **Data's make Cable Lugs** – We manufacture both Aluminium & Copper Thimbles, Ring, Pin, Fork & Tubular type Terminal Ends as per IS 8309 tested from ETDC.
 - ▶ H.T, MIP, SIP, Meter Boxes as per Electricity Board Specifications.
 - ▶ 33/11 KV Control & Relay Panels, L.T. Distribution Boxes.
- 

C. TURNKEY CONTRACTOR:

- ▶ Installation & Commissioning of 11, 33 & 132 KV Sub Stations specialized in electrification of Townships, NHAI, Sub-Stations, and Infrastructure Projects.
- ▶ Approved Contractor of I.O.C.L., J.D.A., JVVNL, AVVNL, JdVVNL, RRVPNL, RVUNL etc.
- ▶ Also done Fly over & Highway Street Light Electrification with High Mast.

D. WE ALSO SUPPLY THE FOLLOWING ON ORDER:

- ▶ Automatic Electric/IMP/DIP Metering Instruments.
 - ▶ Erection & Commissioning of 11 KV/33KV sub-station.
 - ▶ H.T & L.T., C.Ts
 - ▶ Sudhir, Generating Sets of all range.
 - ▶ Alstom/Kirloskar make Transformers.
- 

List of Some Prestigious Turnkey Projects executed by S.E.P.L.

1. **Eden Garden, Chomu Road, Jaipur (GHP Group)-** Complete external electrification done underground /overhead cabling including street light also.
 2. **ABB Ltd., Nashik-** Manufacturing, Supply, Installation (Civil Work) of 2 Pole & 4 Pole Distribution transformer structures installed in Jaipur City (A pilot project of underground cabling).
 3. **Supreme Infrastructure Ltd., Transport Nagar Fly Over-** Supply, Installation & Commissioning of High Mast, Street Lights, Cabling & Paneling. Under supervision of JDA officials.
 4. **Supreme Infrastructure Ltd, Patiala-** Electrification of Toll Plazas on BOT Road-Supply, Installation & Commissioning of High Mast, Street Light Poles, Cabling & Paneling.
 5. **Indian Oil Corporation Ltd. (I.O.C.L.), Head Office, Jaipur & Regional Office Ajmer-** A Unique project of Grid Earthing of 100 Petrol Pumps by G.I. Strips, Wire and Cast Iron Pipe which also included cabling & refurbishment of LT Panel installed.
 6. **Samanway Township, Bhilwara (Unique Builder Group) -** Complete external electrification including Supply, Installation & Commissioning of Transformers, RMU, Panels, L.T. Distribution boxes and Street Light.
 7. **Supreme Infrastructure Ltd., Gurgaon-** Ring Road Utility (Electric) shifting order. Order Value Approx. 30 Crore.
- Many more such Projects in Pipe Line.

PLANT & MACHINERY

S.No.	Particulars of Plant & Machinery	Qty. (Nos.)
1	80 Tonne Power Press with NGEF Motor	2
2	20 Tonne Power Press with NGEF Motor	4
3	100 tonne Power press With NGEF Motor	2
4	60 tonne Power press With NGEF Motor	4
5	30 tonne Power press With NGEF Motor	1
6	Lathe Big with Motor	1
7	Lathe small with Motor	2
8	Drill Machine with Motor	1
9	Welding Machine 400w Dry Type	4
10	Welding Machine 200 w Dry Type, Double holder	2
11	4.6' long hand press for bending 10 guage sheet	1
12	Sheet Cutter heavy duty for cuting the sheet upto 10 guage	2
13	Air Compressor for painting	1
14	Grinder & Hand Drill	4
15	Stand Drill	2
16	Player set	1
17	Spanner set	1
18	Ring Cutter	1
19	Socket set	1

TESTING EQUIPMENTS

Sl. No.	Testing Equipment/ Instrument	Make	Range	Class of Accuracy	Qty. in Nos.
1	Voltmeters	A.E.	0-150-300-600-V	0.5	3
2	Ammeters	A.E.	0-2-10 Amp	0.5	3
3	Wattmeters	A.E.	0-2.5-Amp-600 V	0.5	3
4	Ratiometer	Electrotech	0.01 to 1100	1.5	1
5	KV meter (HV set)	A.E.	0 to 80 KV	1.5	1
6	KV meter (Oil test set)	Prayog	0-120 KV	1.5	1
7	Voltmeters	A.E.	0 to 1000 Volts	0.5	1
8	Frequency Meter	S.I.S.	0-150 Hz		1
9	Multimeter	Udairaj	---	0.2	1
10	Portable CT	A.E.	0-5-10-12.5-25-50-5075-100-200/5 Amp	0.2	3
11	Portable PT	A.E.	11 KV,110 Volts	0.5	3
12	LV High Voltage set	Sakowa	0 to 5 KV		1
13	Wheat Stone Bridge	OSAW	1 ohm to 11 Meg.ohms	1	1
14	Kelvin Bridge	Toshniwal	.01 to 110 Mill ohms	0.01	1
15	Insulation Tester	Waco	0 to 2500 Volts		1
16	Test bench	Expo-Fyn			1
17	Dimmerstate	A.E.	63 Amp 3 Phase 470V		1
18	Dimmer state	A.E.	20 Amp, 1 phase, 350V		1
19	Booster Transformer	Danish	100 KVA, 1250V		1
20	High Voltage T/F	Danish	15 KVA, single phase, 250/80 KV		1
21	D.V.D.F. set	NGEF	10/15 H.P.		1
22	Oil Test set	Prayog	0-120 KV		1
23	Thermometers				10
24	Capacitor	Asian	10 KVAR		4
25	Gen. Set	Kirloskar	63 KVA, 3 phase, 430V		1

Quality Assurance Plan for fabrication of Steel Structures

Step 1:

- ▶ We'll release the order of steel sections who manufacture good quality of steel as per IS Specification with a tolerance of $\pm 2\%$ in weight and $\pm 0.5\%$ in dimension.

Step 2:

- ▶ After the readiness of steel section we'll inspect the same at their works according to tolerance. We have dedicated person who checks quality of raw material, semi finished and finished goods regularly at fixed intervals.

Step 3:

- ▶ We use in house calibrated dies and punches for cutting and punching of steel sections.
- ▶ We measure the steel sections which are cropped and punched after every hundred sets. We also measure the dies and punches after every one thousand strokes. We also check weight and measurements of the steel sections at regular intervals.

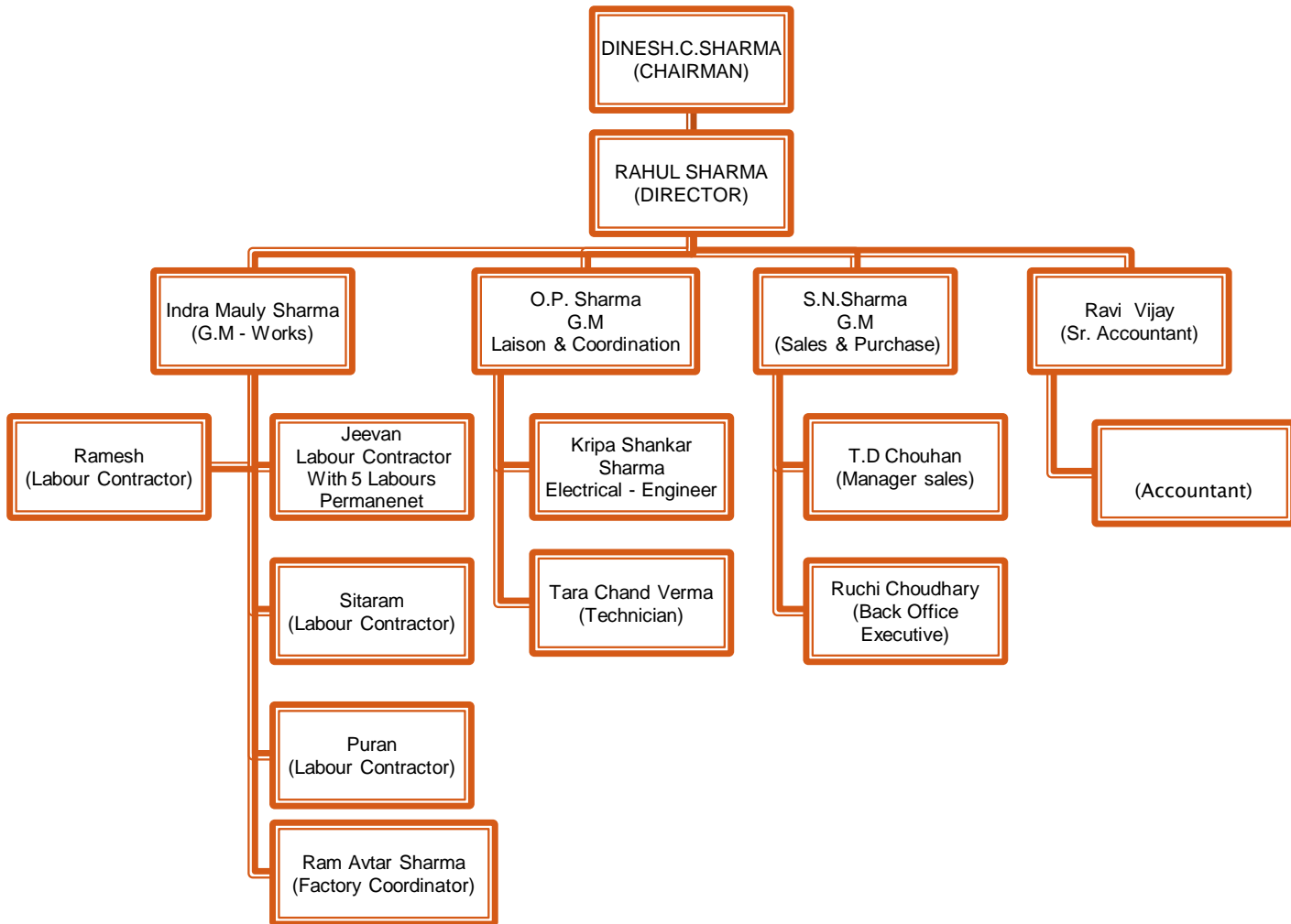
Step 4:

- We use ISI Earthing Rods for welding the steel sections. So the uniformity of the welding results ok. Also the strength of the welding is checked regularly.

Step 5:

- ▶ We regularly update the stock of Raw material, semi finished and finished goods.

ORGANIZATIONAL CHART



ORDERS RECEIVED FROM RSEB/VIDYUT COMPANIES & OTHERS AND EXECUTED

Meter Boxes Manufacturer

- ▶ SE (TLPC), R.S.E.B, Jaipur TN-3328 for Rs. 65,90,500.00
- ▶ SE (TLPC), R.S.E.B, TN-3372 dated 1.12.97 for Rs. 14,48,350.00
- ▶ SE (MM), R.S.E.B, TN-3375 of Various Meter Boxes.
- ▶ SE (TLPC), R.R.V.P.N.L, TN-3440 dated 14.08.2000 for Rs. 11,61,989.00
- ▶ SE (MM), Jodhpur Discom, TN-90 (2003-04) for Rs. 7,77,500.00
- ▶ SE (Proc.) Jaipur Discom, TN-1811 (2003-04) for RS. 4,00,000.00
- ▶ Supplied to M/s. Selmore Electricals against TN-90 (2003-04) for Rs. 7,77,500.00 & SE (Proc.) Jaipur Discom, TN-1811 (2003-04) for Rs. 4,00,000.00
- ▶ SE (MM), J.V.V.N.L, TN-1956 of H.T. & M.I.P Meter Boxes (2007-08)
- ▶ SE (MM), J.V.V.N.L, TN-2040 of H.T & M.I.P Meter Boxes.

L.T. Pillar Boxes Manufacturer

- ▶ SE (SSPC), R.S.E.B, Jaipur TN-2451 of 160 Amps. For Rs. 3,77,403.00
- ▶ SE (SSPC), R.S.E.B, TN-2486 of 400 Amps. Dated 04.08.99 for Rs.8,64,289.00
- ▶ SE (SSPC), R.R.V.P.N.L, TN-2531 of 400 Amps. Dated 01.03.01 for Rs. 22,43,670.00
- ▶ SE (MM&C), Jd.V.V.N.L, TN-53 of 400 Amps. Dated 19.12.02 for Rs. 7,17,500.00

Control & Relay Panels Manufacturer

- ▶ SE (SSPC), R.S.E.B, TN-2436 of 11/33 KV C & R Panels for Rs. 11,00,667.00
- ▶ SE (SSPC), R.R.V.P.N.L, TN-2514 of C & R Panels dated 08.09.2000 for Rs. 8,64,939.80
- ▶ SE (SSPC), R.R.V.P.N.L, TN-2558 of C & R Panels dated 11.09.2001 for Rs. 4,53,876.00
- ▶ SE (MM&C), Jd.V.V.N.L, TN-8, of C & R Panels February 2002 for Rs. 1,54,000.00
- ▶ SE (SSPC), R.R.V.P.N.L of Marshalling Kiosk for Rs. 4,00,000.00
- ▶ SE (SSPC), R.S.E.B, Jaipur TN-2517 of Marshalling Kiosks.
- ▶ SE (SSPC), R.R.V.P.N.L, Jaipur TN-2637 of Marshalling Kiosks.

Contd... (2)

**Steel Fabricated Items (Sub-Station Structure) Fabricated and supplied to
Various Discom and F.R.P. & R.G.G.Y Contractors**

Jaipur Discom

- ▶ TN-4090 of 11/0.4 Structure Approx. 80 Lacs.
- ▶ TN-4136 of 11 KV “V” Cross Arm with Top Hamper against P.O. No. D.105 dated 09/07/07 for Rs. 79,68,829.65
- ▶ TN-4114 of Sub Station for Single Phase Transformer.
- ▶ TN-4137 of 33 KV D/C Lattice Structure.
- ▶ Supplied to Angelique International TN-140,145
- ▶ ABB Ltd. of I.T & C.R.P TN-07.
- ▶ Dee Control TN-173 (Lot 1 & Lot 2)

Ajmer Discom

- ▶ TN-157 (2004-05) of L.T. Cross Arms Approx Rs. 1 Crore.
- ▶ TN-265 (2005-06) of L.T. Cross Arms Approx. Rs. 70 Lacs.
- ▶ TN-237 (2005-06) of L.T. Cross Arms Approx. Rs. 1 Crore.
- ▶ TN-316 of Single Phase Transformer Structure.
- ▶ TN-424 of 11 KV “V” Cross Arm with Top Hamper (250 MT).
- ▶ TN-453 of Single Phase Transformer Structure.
- ▶ TN-474 of 11/0.4 KV S/S Structure Sets & 33 KV Line DP Structure (567.53 MT) Rs. 22031196.76
- ▶ Supplied to KLG Systel against TN-131.
- ▶ To Angelique International TN-104 & 105.
- ▶ To Pawan Kumar Singhal against TN-317 Cantilever 600 m. m. long.
- ▶ TN-689, TN- 691, TN-693, TN-695, TN-697 approx. Total Order Value 15 Crore.
- ▶ TN-751,752,753,754,756 Approx. Value 15 Crore

Jodhpur Discom

- ▶ TN-116 of Welded/Non Welded Items dated 30.08.2002 for Rs. 48,00,000.00
- ▶ TN-316 (2005-06) of 11/0.4 Structure Approx. Rs. 1 Crore.
- ▶ TN-290 of 11 KV “V” Cross Arm and Top Hamper.
- ▶ TN-487 of 11 KV “V” Cross Arm and Repeat Order.
- ▶ TN-551 of 11/0.4 KV Sub Station Structure (225 MT).
- ▶ TN-548 of 11 KV Line D.P. (200 MT)
- ▶ Supplied to Pawan Kumar Singhal Earthing Rods and Steel Fabricated Items.
- ▶ To Ramswaroop Industries against TN-88, 89, 96 & 99.

Cable Lugs (Data's make) Manufacturer Ring, Pin, Fork, Tubular etc.

- ▶ SE (Proc.) R.S.E.B, Jaipur TN-1585 of Aluminum Lugs Rate Contract for 2 years.
- ▶ Rate Contract of Aluminium Cable Lugs of Ajmer Discom for two years against TN-292.
- ▶ Rate Contract of Aluminium Cable Lugs Jodhpur Discom (2005-07) against TN-410.
- ▶ Rate Contract of Aluminium Cable Lugs Jodhpur Discom (2008-10) against TN-609.
- ▶ Supplied to Erstwhile R.S.E.B, Instrumentation Ltd., M.S.E.B. Bombay, Jaipur Meters, and P.H.E.D., Udaipur. Our Cable Lugs are E.T.D.C. tested.

Supply of Spare Parts of 11/33 KV VCB & Other Items:

- ▶ Various Vidyut Companies Spare Parts Supply of Rs. 4,00,00,000/-
- ▶ Various Power Plants Cement & Fertilizers Industries, Spare Parts Supply of Rs. 1 Crore.
- ▶ Lighting Arresters of 30 Lacs to Contractors of N.H.A.I., Jaipur Discom, Wind Mill Projects of Jaisalmer.
- ▶ Service Centre and Authorised Dealer of 11 & 33 KV VCB Spare Parts of AREVA (GEC, ALSTOM) make for Rajasthan. Supplying Spare Parts regularly in Jaipur, Ajmer Discom, Prasaran & Utpadan Companies. Also dealing and supplying Transformers, RMU, VCB, CT & CVT of AREVA make in Rajasthan to Contractors and Industries.
- ▶ Authorised Dealer of Electromechanical & Microprocessor Relays of Areva make for Rajasthan. Regularly supplying in Discoms, Prasaran & Utpadan Companies also Shree Cement, DSCL, RAPP, LNJ Group, Panel Manufacturers etc.

List of Pvt. Customers for Supply of ALSTOM Make Electromechanical & Microprocessor Relays

Sr. No.	Customer Name
1	Chambal Fertilizers and Chemicals Ltd., Kota
2	Shri Ram Vinyl & Chemicals Industries (DSCL), Kota
3	Bosch Limited, Jaipur
4	Ultratech Cement Limited, Jodhpur
5	Ginni International Ltd., Neemrana
6	Bal Krishna Industries Ltd., Alwar
7	Honda Siel cars India Ltd., Noida/Bhiwadi
8	HINDUSTAN ZINC LIMITED, Chittorgarh & Rajsamand
9	Jindal Saw Ltd, Bhilwara
10	Trinetra Cement Ltd, Banswara
11	J.K. LAKSHMI CEMENT LTD., Sirohi
12	J.K White Cement Works, Nagaur
13	Grasim Industries Ltd, Jodhpur
14	MANGLAM CEMENT LTD., Kota
15	RSWM LIMITED, Banswara
16	SANGAM (INDIA) LTD., Bhilwara
17	Shree Cement Ltd, Beawer / R.A.S, Jaipur
18	Surya Chambal Power Ltd., Kota
19	Ashok Leyland, Alwar
20	ACC Cement, Lakheri / Bundi.
21	Binani Cement Ltd., Sirohi

List of Customers for Supply of ALSTOM Make Electromechanical & Microprocessor Relays – OEMS

Sr. No.	Customer Name
1	Pyrotech Electronics Pvt. Ltd., Udaipur
2	Dynamic Elect. Power Pvt. Ltd., Bhilwara.
3	Danish Private Ltd, Jaipur.
4	Mangal Udyog, Jaipur
POWER PLANTS & UTILITIES	
1	Nuclear Power Corporation of India Ltd., Kota
2	Kota Super Thermal Power Station, Kota
3	Suratgarh Thermal Power Station, Suratgarh
4	DCCPP, Dholpur
5	Chhabra Super Thermal Plant (400kv/220kv), Baran
6	Giral Lignite Thermal Power Station, Barmer
7	Mahi Hydrel Power Station, Banswara
8	Naveli Lignite Power Pvt. Ltd., Bikaner
9	Rajasthan Rajya Vidyut Prasaran Nigam Ltd.
10	Jaipur, Ajmer & Jodhpur Discom.